



People & Technology

THE VALUE OF HUMAN FACTOR

*"Customer is much more than someone who gives the assignment.
He is our source of inspiration"*



First of all, thank you very much for your assistance.

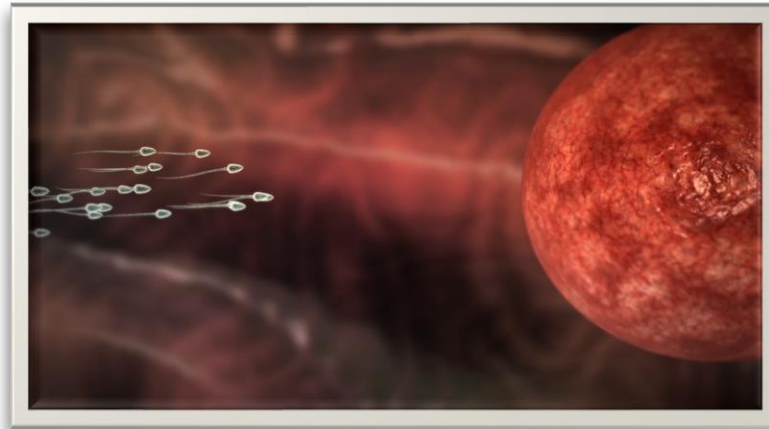
The general idea of this meeting is to introduce our products.

We are firmly convinced that our products can help you, to develop your projects, be more competitive, and offer differentiated products from your competitors.

You can find much more expanded information on our website: <https://www.personasytecnologia.com>

People & Technology

THE VALUE OF HUMAN FACTOR



Much more than printhead cleaning systems

COMPANY & BRAND

Created in 2006, People & Technology was born to provide service to the ceramic industry, covering technological areas where there were no solutions, or with inadequate solutions.

Currently, People & Technology has expanded its activity to other industrial markets, once again offering technological solutions, which are currently non-existent.

As a result of the R&D necessary for the development of our solutions, People & Technology has numerous patents, registered worldwide, which highlights the innovative character of our machines.



Today, we are present in more than 35 countries

“The name of our company shows the most important value for us; The Human Factor. People who work together with us every day”

Javier Gaya, CEO People&Technology

PORTFOLIO





CLEANJECTOR

by People & Technology

The cleaning system Cleanjector®, allows to recover, practically, all clogged printheads. Any manufacturer or model, regardless of the degree of nozzles blockage. Suitable for any kind of ink.

Years of investment in R+D to evolve our system of high efficiency. Cleanjector® always offers the highest performance rates, while the safety of the printhead is guaranteed.

All models of printheads:

SEIKO – XAAR – DIMATIX – TOSHIBA – KYOCERA – KONICA MINOLTA – RICOH – DURST - EPSON

People&Technology will offer you the widest range of solutions for cleaning printheads; from the basic for 4 simultaneous print heads, to the most professional option where you can clean 12 printheads at the same time.

Our system is completely automatic and unattended and this offers the greatest guarantee of success.

The collaboration with the main manufacturers of printheads, has allowed to create specific processes for each brand and model, with the maximum guarantees of efficiency and safety.



CRIBHEADS, Machine designed for the maintenance of any type of industrial head, while it is not in use.

It is an oscillating table, with specific supports for each head.
The oscillation speed and temperature can be regulated.

Once started, the machine generates soft waves that constantly caress the nozzle plate of the head, always keeping it moist and preventing any particles from coming into contact with the nozzles.

CRIBHEADS offers you the perfect place to keep the head once removed from the machine. The reasons can be multiple:

- In combination with our CLEANJECTOR cleaning machine. Before putting the heads to clean, a few hours in CRIBHEAD facilitate subsequent cleaning.
- If you need to test different heads daily, this tool will make your work much easier.
- Printers with colors that do not work daily. Avoid drying the heads in the production machine and keep them always ready for use.

CRIBHEADS, the ultimate solution to maintain your heads.



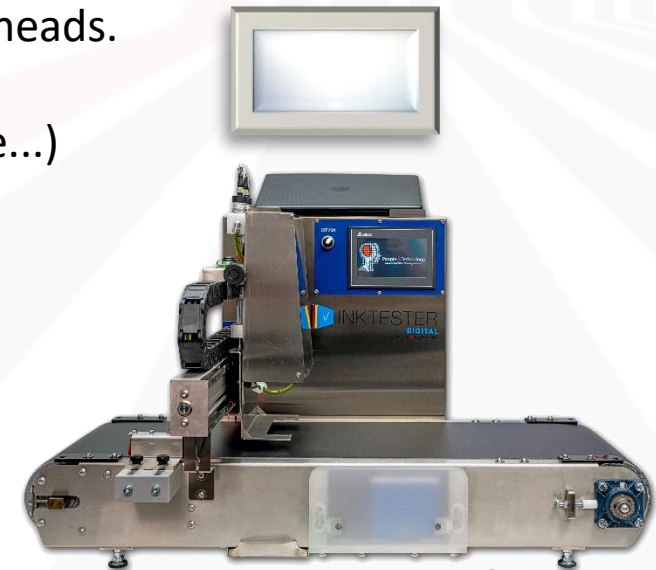


INKTESTERTM

With InkTester[®] you can make the jump to the next level of quality management in printing. Of course, you can check the status of the printhead under real conditions. After cleaning the printhead, a simple test with InkTester[®] allows you to check that the printhead is ready to be used again. However, you can get many more benefits:

- Compare different inks simultaneously.
- Check the status of a specific ink batch.
- Get color performance on different materials in just one minute.
- Simulate the results obtained in the same material, using different types of print heads.
- Simulate real printing parameters, without stopping the production process; (temperature control, meniscus, flow, waveform, from binary to grayscale, voltage...)

In short, the versatility of InkTester[®] allows you to have your own authentic laboratory, which offers you a hard-to-imagine independence so far. Print on any material (ceramics, glass, wood, textile, plastic, paper) and with any kind of inks (oil based, water based, soluble salts, UV, organic, inorganic)



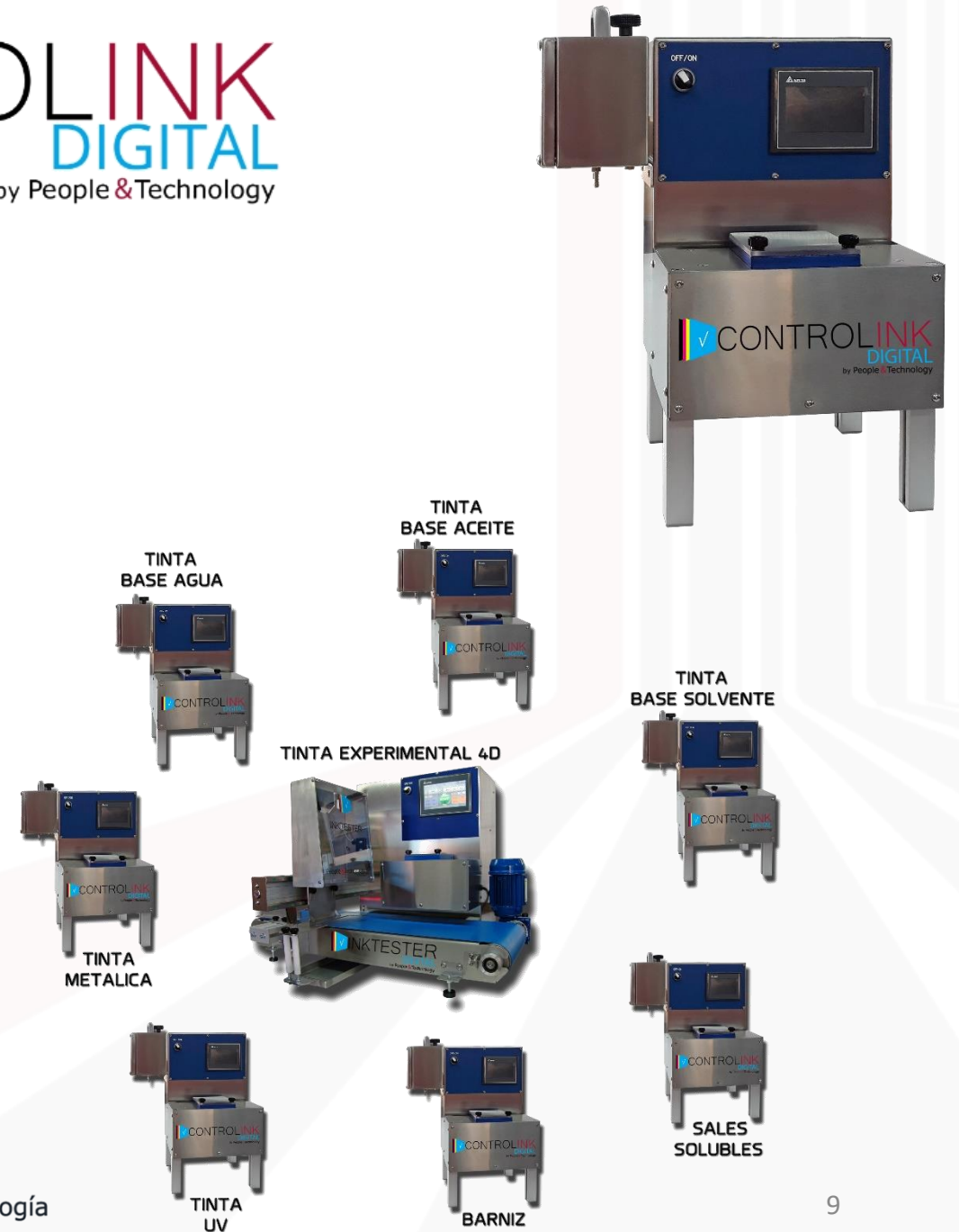
DO NOT SET LIMITS TO YOUR BUSINESS GROWTH

CONTROLINK, in combination with INKTESTER DIGITAL, allows you to continue expanding your laboratory for ink control and development.

Add to your INKTESTER DIGITAL, as many **CONTROL INK** as necessary, as you need them, without limits. The more **CONTROL INK** you have, the greater your work independence.

Increase your ability to perform simultaneous tests with different inks. Allow multidisciplinary teams to share INKTESTER DIGITAL, but each of them manage their own inks.

The **CONTROL INK** takes advantage of the printing functions of INKTESTER DIGITAL, but it is a totally independent and autonomous ink circuit.





BACKTRACK

by People & Technology

BACKTRACK - The first digital printing machine that prints from the bottom to up in high-resolution; bar codes, QR codes, date, time, logos, images, and custom labels.

- ✓ Advanced printing software allows production traceability, printing dynamic designs in which the image changes as the units go through.
- ✓ Greater printing surface, allows to decorate and label a new surface which was inaccessible until now.
- ✓ Suitable for all kinds of inks oil-based, ceramics, UV inks.
- ✓ Total control "Heating and recirculation system".
- ✓ Automatic head cleaning system. Programmed to production needs.
- ✓ Easy and fast file switching.
- ✓ Suitable for printing on all kinds of products and sectors, ceramic, glass, wood, textile.
- ✓ Reduced dimensions and easy integration in any area of the production system.





2DREADER

by People & Technology

2D READER, because Industry 4.0 is already here.

- ✓ Maximum speed line up to 50 m/min
- ✓ Communication mode: Modbus TCP.
- ✓ Up to 24 devices in the same network.
- ✓ Workd in ambien light conditions of the environment.
- ✓ Works with al types od codes (DATAMATRIX is hard recommended for ceramics)
- ✓ Distance between the reader and the piece, adjustable (between 120mm to 250mm)
- ✓ Continuous flow of air over the reader, to avoid sedimentation of dust.
- ✓ Estremely robust, encapsulated in a stainless steel case.
- ✓ Frame with height adjustment.
- ✓ Heavy and solid base, which allows to keep the equipment static without anchors.





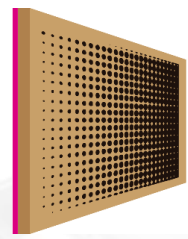
Inks share a common problem: sediment building up during storage. With the Spinink stirring system, the intensity of your inks will be kept constant and homogeneous. While the ink is being stirred, it is brought to working temperature, thus avoiding print errors during production.

- ✓ Compatible with all ink packages models.
- ✓ Temperature control.
- ✓ Compact and rock-solid, made of aluminum and stainless steel.
- ✓ Adjust the ink for work without sediment.
- ✓ Process your ink with total confidence.

Capacity:

Mini	V0	V1
4 Cubitainers of 10 Kg 8 Packages of 5 Kg	12 Cubitainers of 10 Kg 20 Packages of 5 Kg	12 Packages of 16 Kg From 36 up to 44 Packages of 5 Kg





BACKPRINT



The new generation of machines to apply engobe, uses silicone roller technology, to achieve a quality and perfection in the application, never seen until now.

Print with your own engobe to get corporate image (texts, logos...)

Apply the required quantity with total accuracy, without staining the rest of the tile.

Guarantee the return of your investment.

- ✓ Reduces to 40% kiln stoppages, for cleaning and maintenance.
- ✓ Reduces to 30% annual purchases of new ceramic rollers for the kiln.
- ✓ Reduces to 40% the engobe consumption, due to correct application.
- ✓ Reduces to 20% the waste. Permanently clean work area.
- ✓ Print your company logo with an engobe..
- ✓ Widths print available: 76cm / 96cm / 126cm / 173cm.

!Produce more than 3 million sqm. with the same roller!



With the innovative dry brushing system developed by People&Technology, customer will improve the visual effect of the ceramic surface, removing all kinds of surface impurities and produces a more glossy finish that is smoother to touch, while providing the possibility of developing a new product range applying new effects and granilla polishing, thus creating a higher-quality product with high added value.

The **patented** systems we have developed to control pressure and brush wear will greatly decrease production costs and extend the brush's durability.

The visualization and management is done through a touch screen, automatically controlling all the variables of the production process.

The power, intensity and speed of the brushing are controlled by means of a servo motor and the stepper motor installed controls the height / friction of the roller, automatically modifying the parameters of use and consumption and notifying by light signals the wear of the same.

Available up to 5 rollers on the same machine and with a maximum piece width of 1800 mm.





It is a single print bar, maximum print width 70 centimeters, with RC1536 printheads.

It can work autonomously, in that case it is delivered with a transport table, or it can be offered as a bar for OEM integrators not familiar with INKJET technology, to include it in their products.



BACKDISH - Designed exclusively to print logos, codes, serial numbers, etc., on ceramic porcelain.

- ✓ Prints in high resolution: Images, Logos, QR Codes, Barcodes, personalized labels
- ✓ It admits all kinds of inks; Solvent base, Water base, Oil base, UV, Soluble salts
- ✓ Size of the piece to be printed; between 35 mm. and 350 mm.
- ✓ Up to 360 DPI resolution (depends on the printhead)
- ✓ Transport speed up to 34 meters / minute, depending on the resolution.
- ✓ Customized productions for each customer, automatically.
- ✓ Extremely simple to integrate into the current production line.
- ✓ Minimum maintenance.
- ✓ Multi-language interface



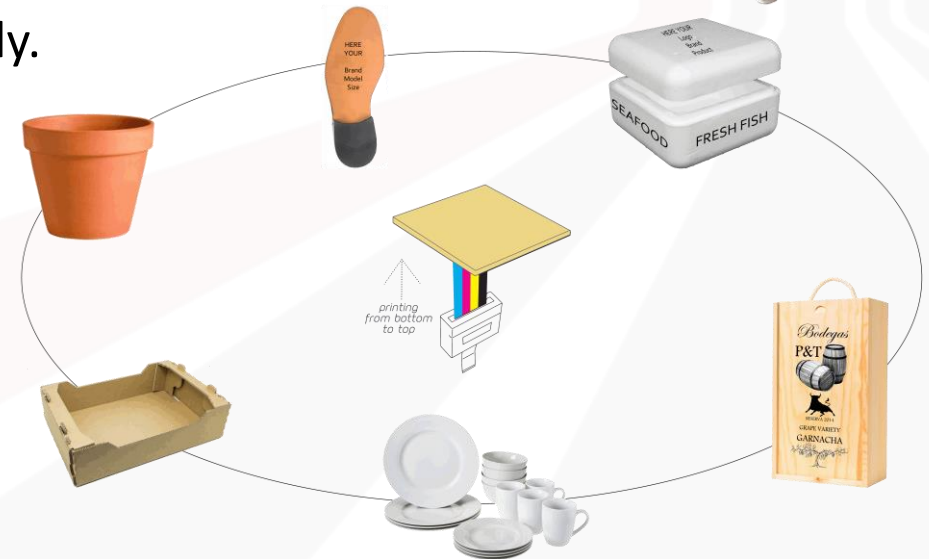


BACKJET

by People & Technology

BACKJET – Manual printer for a test, sample, small productions...

- ✓ Prints in high resolution: Images, Logos, QR Codes, Barcodes, personalized labels
- ✓ It admits all kinds of inks; Solvent base, Water base, Oil base, UV, Soluble salts
- ✓ Size of the piece to be printed:
 - Width: its depends on the printhead
 - Long: till 140 millimeters
- ✓ Up to 360 DPI resolution (depends on the printhead)
- ✓ Customized productions for each customer, automatically.
- ✓ Extremely simple to use
- ✓ Minimum maintenance.
- ✓ Multi-language interface





RodiFlex™

by People & Technology

RODIFLEX, DECORATIVE SOLUTIONS FOR LARGE TILES

- ✓ Designed to decorate and apply high quantities of products “reliefs”, in large tiles BEFORE and after glazing process.
- ✓ Reduce the pressing costs of large format tiles manufactured with “reliefs”
- ✓ Double independent blade
- ✓ Removable head for easy change, maintenance and cleaning inks.
- ✓ Available sizes 1323 – 1603 -1803 – 2000 mm.





INDITRACK
by People & Technology

Certain elements made of **concrete**, such as prestressed joists, plates, blocks, etc., must incorporate by law, certain visual information. Until today, this information was printed with manual methods or with dot printers, an obsolete technology that prevents the natural evolution of “mandatory marking”, towards the information age.

The need to communicate with our customers, makes any free surface of our product that we can use to offer information, becomes a powerful marketing tool and therefore becomes a key point for the ability to penetrate and consolidate, not only of the potential market, also of new opportunities.

Pleasant visual information, customizable logos, QR codes that automatically connect to our website or that provide instant technical information about the product, decorated beams that allow natural integration in rustic environments.





TECHNICAL ASSISTANCE SERVICE

Thanks to the large professional experience of our technicians, we can provide TECHNICAL ASSISTANCE SERVICE worldwide, as well you can make your questions.

Our Field Service Engineers covers the following aspects:

- ✓ TECHNICAL ASSISTANCE
- ✓ TECHNICAL ADVICE
- ✓ MECHANICAL AND ELECTRICAL MAINTENANCE
- ✓ SUPPLY OF SPARE PARTS AND ACCESSORIES



The time is
going
cloud

ÚNICANETE TÚ MARCAS TU RITMO

Technology, is your
train to the future

THANK YOU